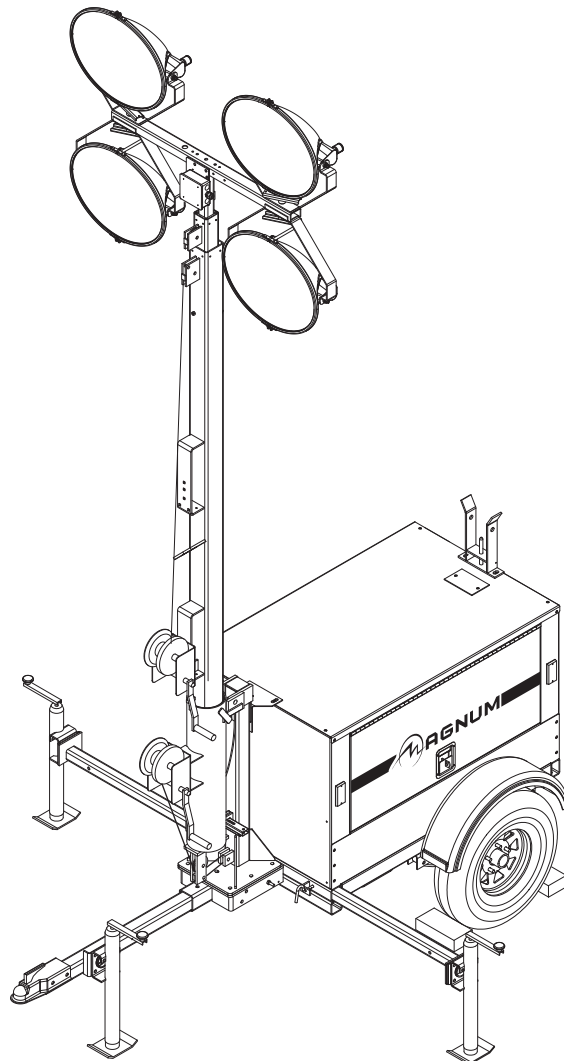




LIGHT TOWER  
MLT3060M • MLT3060K  
MLT3080M • MLT3080K



PARTS MANUAL

## INTRODUCTION

Before servicing this machine, make sure the engine start switch is turned to off "O", the circuit breakers are open (off, "O"), the emergency stop switch is closed (pushed in), and the negative (-) terminal on battery is disconnected. Attach a "DO NOT START" sign to the control panel. This will notify everyone that the unit is being serviced and will reduce the chance of someone inadvertently trying to start the unit. If the unit is connected to a remote start or transfer switch, make sure the remote switch is also off and tagged.

### **▲ WARNING**

**Before operating or servicing this equipment, read and understand the Magnum Operating Manual which was included with the unit when shipped from the factory. Failure to do so increases the risk of injury to yourself or others.**

**MAGNUM PRODUCTS LLC**  
**215 Power Drive • Berlin, WI 54923**  
**U.S.A.**  
**Phone: 920-361-4442**  
**FAX: 920-361-4416**  
**Toll Free: 1-800-926-9768**  
**www.m-p-llc.com**

**For technical or parts QUESTIONS, please contact Magnum Products' Customer Support or Technical Support team at 920-361-4442 or toll free at 1-800-926-9768. Please have your serial number available.**

**To ORDER SERVICE PARTS, please contact the dealer from which you purchased the unit, or call Magnum Products to locate a dealer in your area.**

Engine Make: \_\_\_\_\_  
Engine Serial Number: \_\_\_\_\_  
Engine Model Number: \_\_\_\_\_  
Generator Make: \_\_\_\_\_  
Generator Model Number: \_\_\_\_\_  
Generator Serial Number: \_\_\_\_\_  
Unit Model Number: \_\_\_\_\_  
Unit Serial Number: \_\_\_\_\_

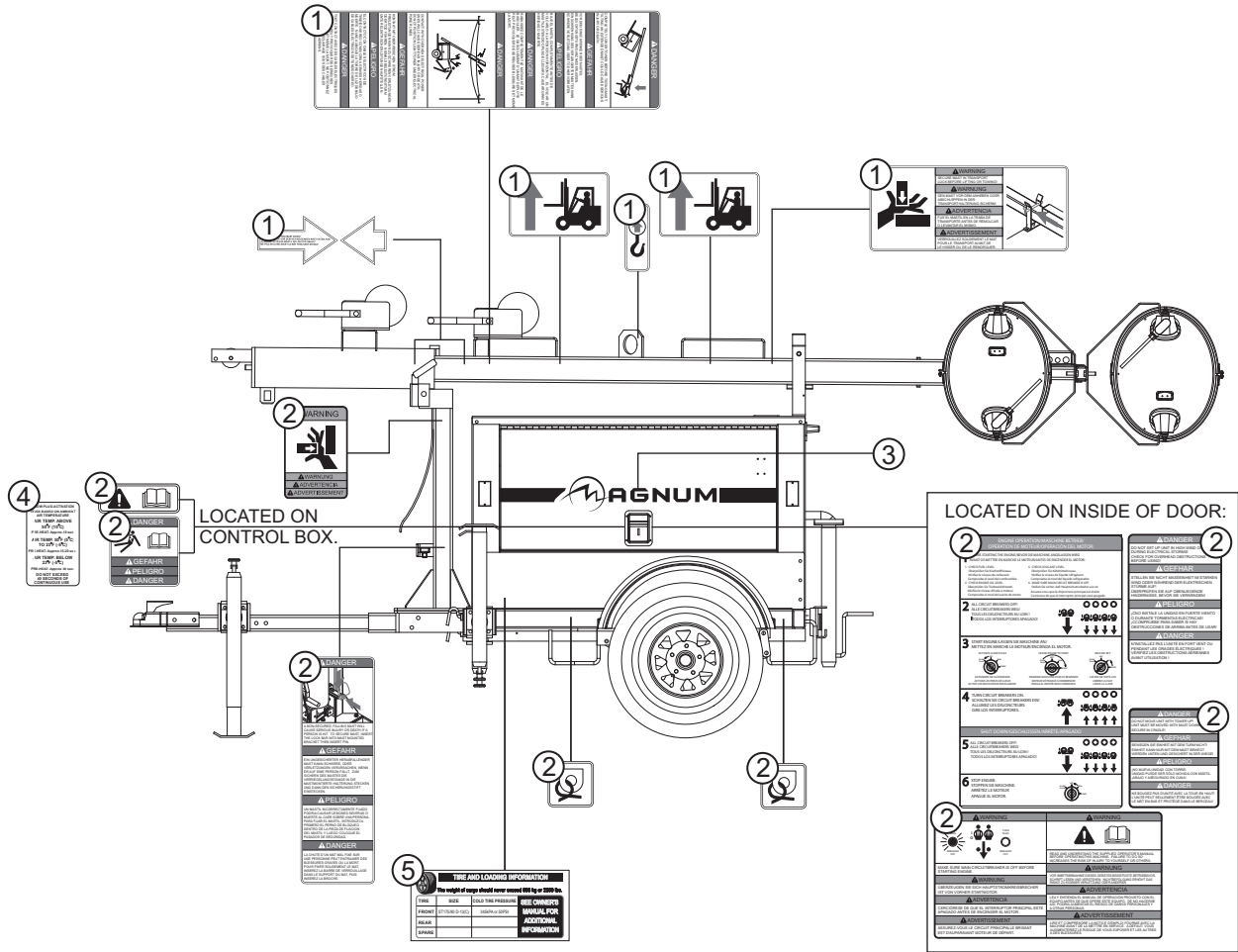
### **▲ WARNING**

**CALIFORNIA PROPOSITION 65 WARNING:**  
**Diesel engine exhaust and some of its constituents are known to the state of California to cause cancer, birth defects and other reproductive harm.**

# TABLE OF CONTENTS

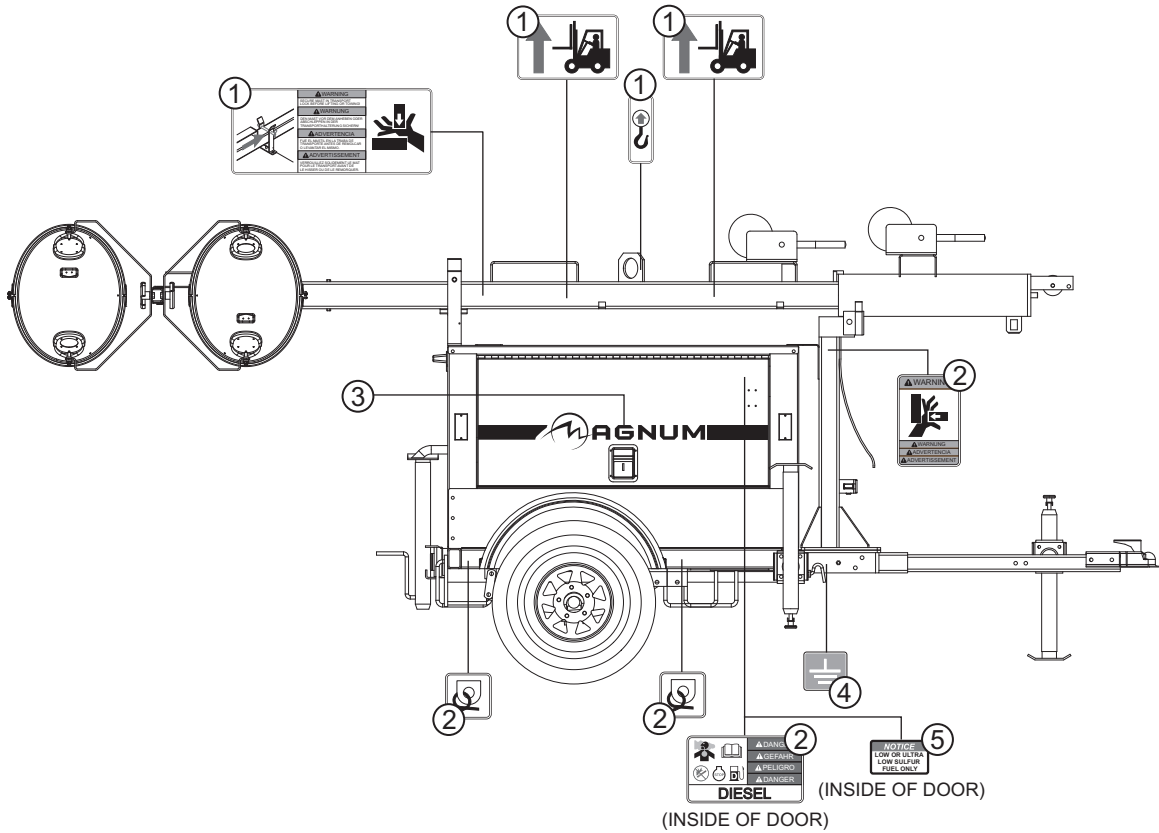
	Page
INTRODUCTION .....	2
TABLE OF CONTENTS .....	3
UNIT DECALS .....	4
6 KW GENERATOR ASSEMBLY .....	8
8 KW GENERATOR ASSEMBLY .....	10
MANUAL WINCH MAST ASSEMBLY .....	12
ELECTRIC WINCH MAST ASSEMBLY .....	14
ENCLOSURE ASSEMBLY .....	16
FRAME ASSEMBLY .....	18
COMPONENTS TO FRAME ASSEMBLY .....	20
MAST POST ASSEMBLY .....	22
MAST JUNCTION BOX ASSEMBLY - QUICK DISCONNECT LIGHTS .....	24
MAST JUNCTION BOX ASSEMBLY - HARD WIRED LIGHTS .....	25
MITSUBISHI ENGINE ASSEMBLY .....	26
KUBOTA ENGINE ASSEMBLY .....	28
OVAL LIGHT ASSEMBLY .....	30
CONTROL BOX ASSEMBLY .....	32
CONTROL PANEL ASSEMBLY - MLT3060M/MLT3060K .....	33
CONTROL PANEL ASSEMBLY - MLT3080M/MLT3080K .....	34
WIRING HARNESS ASSEMBLY .....	35

# UNIT DECALS



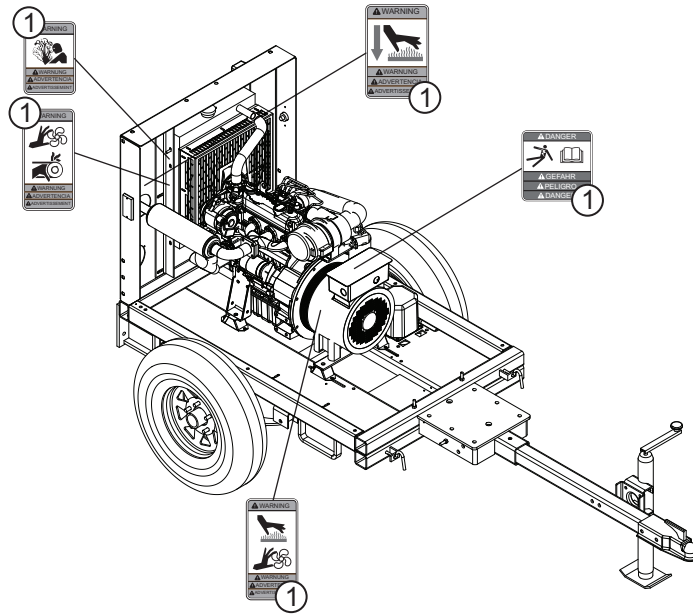
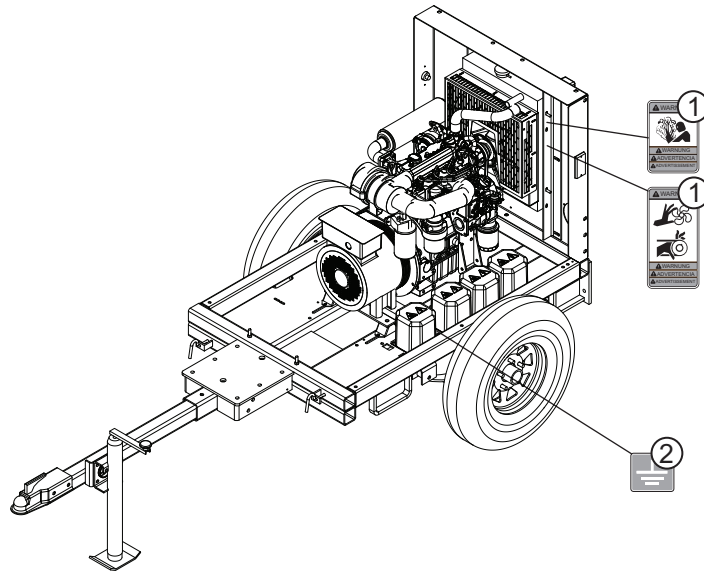
ITEM	PART	QTY	DESCRIPTION	NOTES
1	12140	1	Decal set, common mast 4-lang.	
2	12141	1	Decal set, engine/electrical safety 4-lang.	
3	11174	1	Decal, Magnum logo with red stripe	
4	12405	1	Decal, glow plug operation	
5	29009	1	Decal, tire and loading information	For Kubota units only

# UNIT DECALS



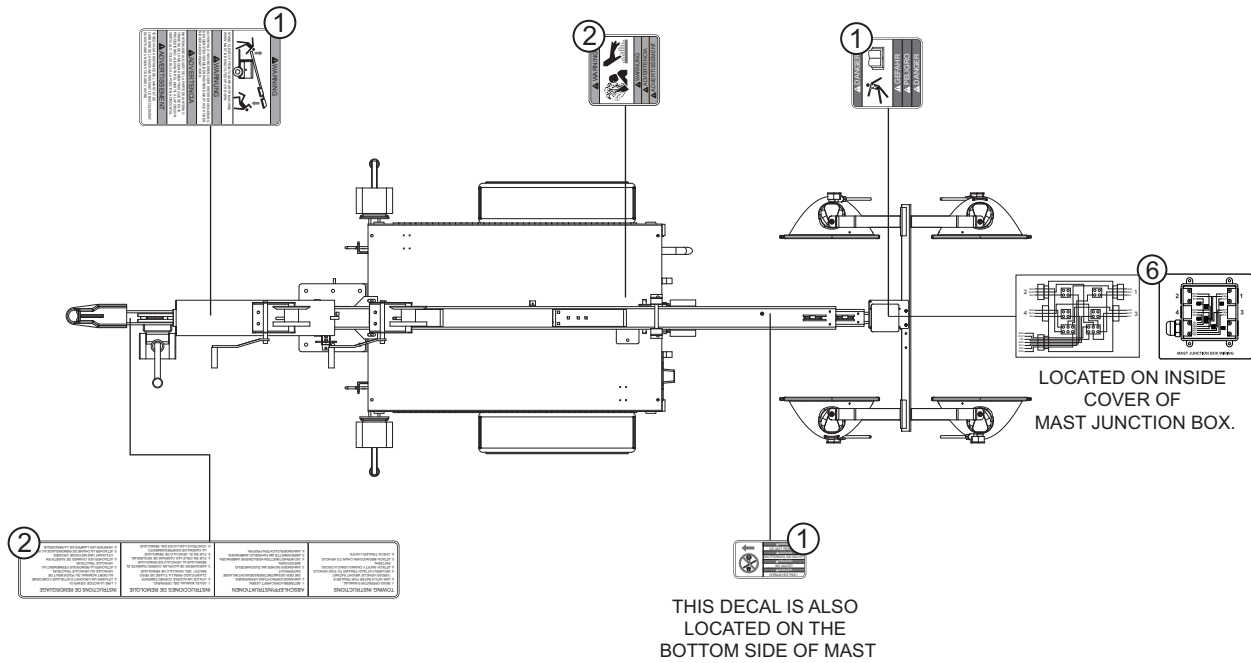
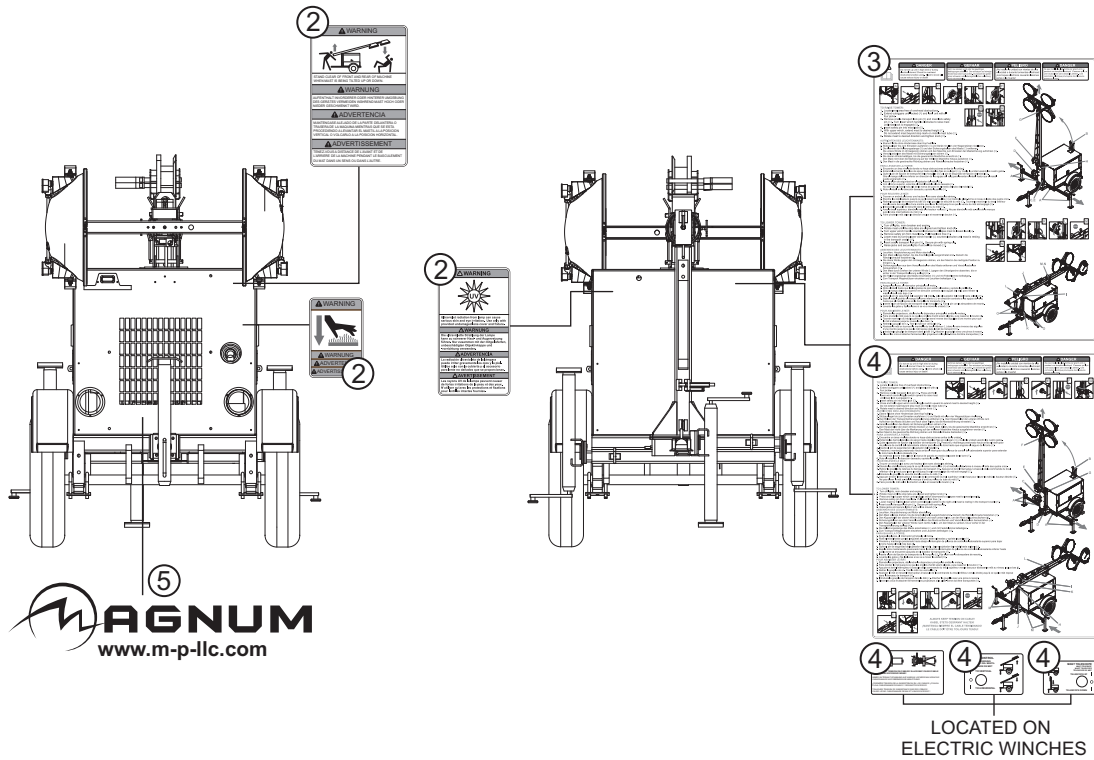
ITEM	PART	QTY	DESCRIPTION	NOTES
1	12140	1	Decal set, common mast 4-lang.	
2	12141	1	Decal set, engine/electrical safety 4-lang.	
3	11174	1	Decal, Magnum logo with red stripe	
4	12142	1	Decal, ground	
5	28695	1	Decal, low or ultra low sulfur fuel only	

# UNIT DECALS



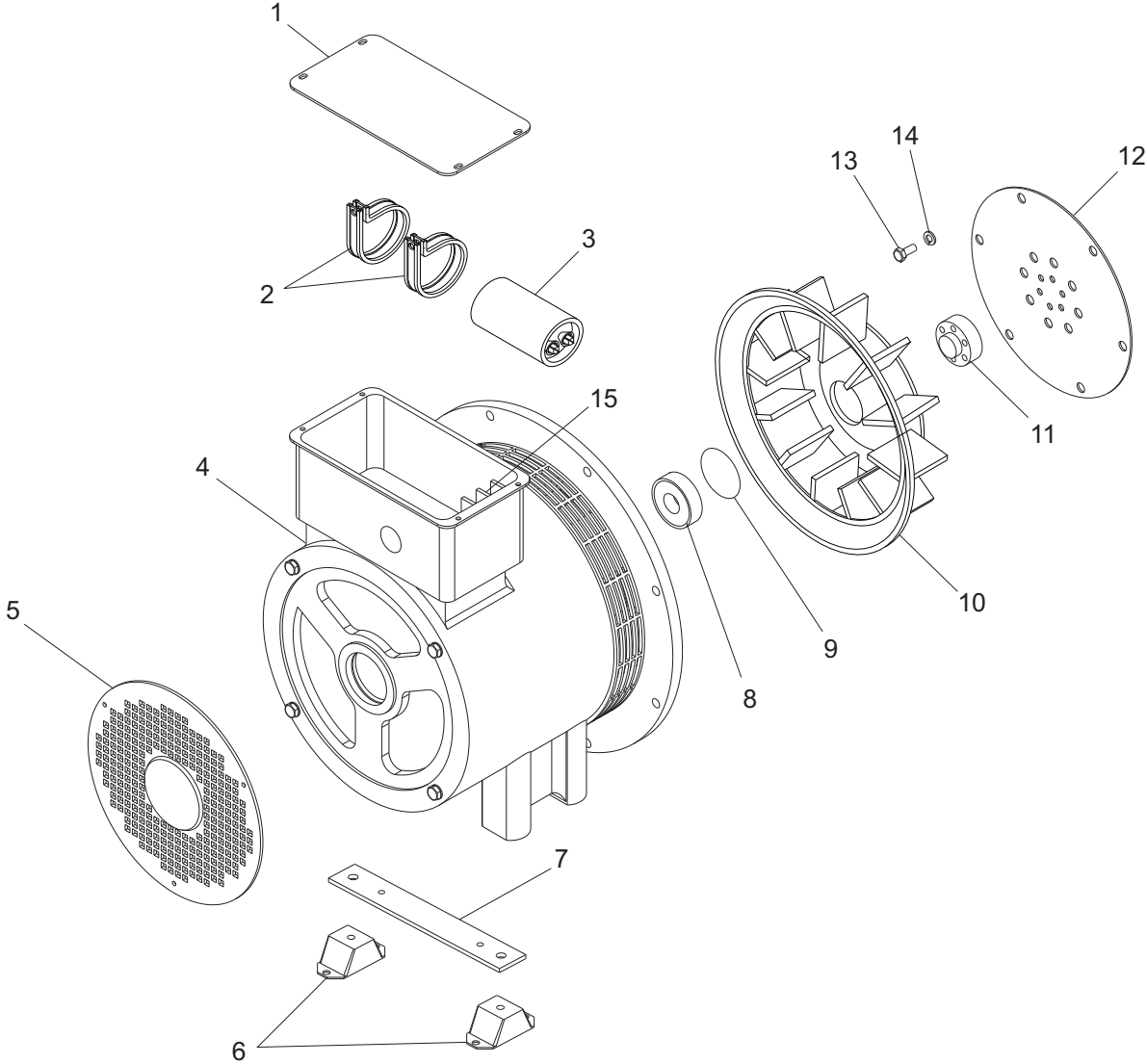
ITEM	PART	QTY	DESCRIPTION	NOTES
1	12141	1	Decal set, engine/electrical safety 4-lang.	
2	12142	1	Decal, ground	

# UNIT DECALS



ITEM	PART	QTY	DESCRIPTION	NOTES
1	12140	1	Decal set, common mast 4-lang.	
2	12141	1	Decal set, engine/electrical safety 4-lang.	
3	10588	1	Decal, instruction - 3000 oval 4 lang	For manual winch models
4	10589	1	Decal, instruction - 3000 oval 4 lang	For electric winch models
5	11275	1	Decal, Magnum logo with web	
6	13614	1	Decal, mast junction box wiring - 4 light	

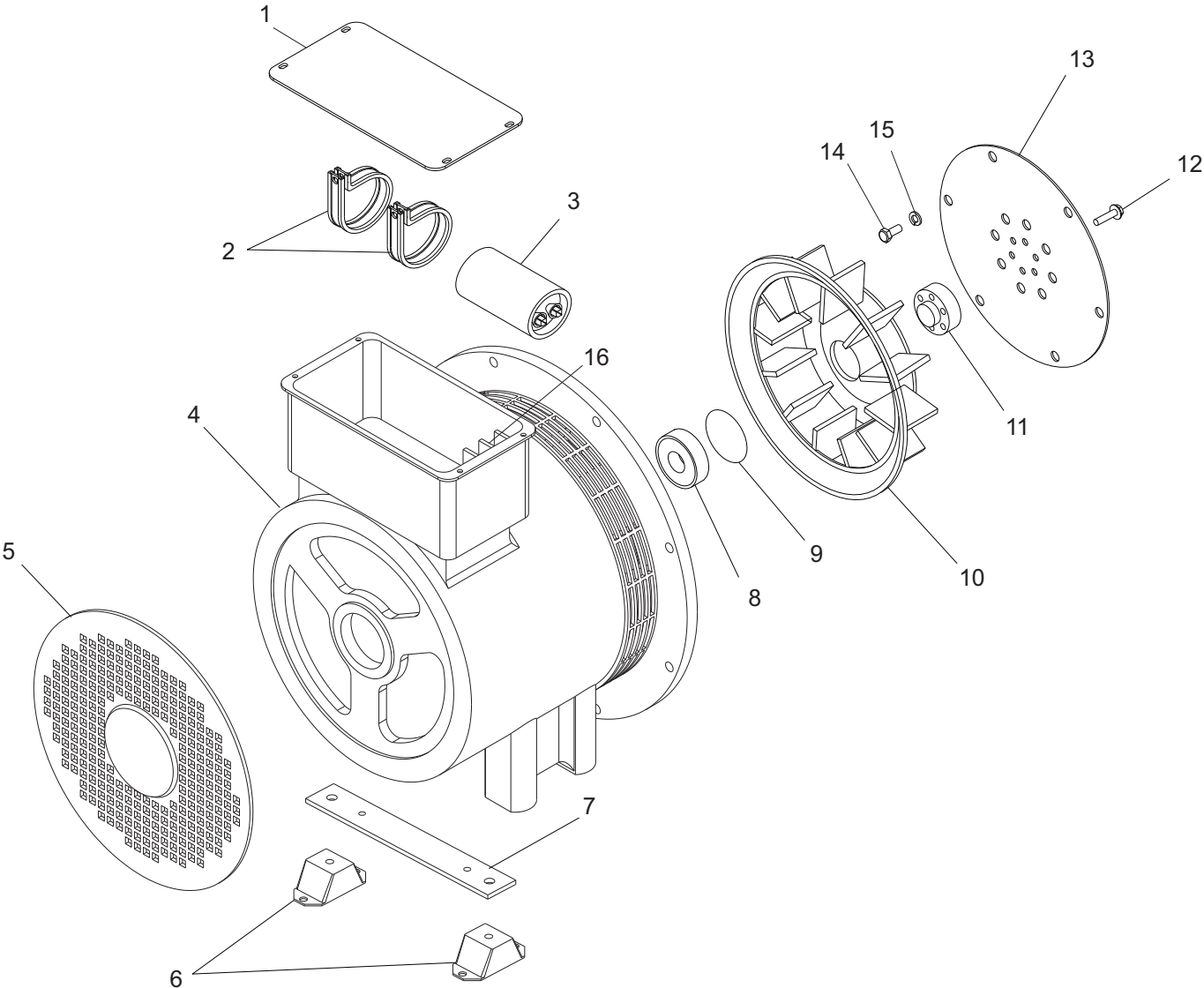
6 KW GENERATOR ASSEMBLY



ITEM	PART	QTY	DESCRIPTION	NOTES
1	12736	1	Marathon gen box cover, 6KW-20KW	
2	16395	2	Capacitor clamp	
3	12159	1	Capacitor, 25 $\mu$ F Marathon 6KW	
	15695	1	Capacitor, 45 $\mu$ F Marathon	
4	16556	1	Generator, 6 kW 60Hz capacitor	Items 1-5 and 8-15
5	12327	1	Marathon 6KW pancake case cover	
6	15241	2	Compression mount, engine/generator	
7	15045	1	Generator mounting bar	
8	12328	1	Marathon 6KW pancake bearing	
9	12329	1	Marathon 6KW pancake bearing seal	
10	12527	1	Fan, Marathon 6KW gen (model 201)	
	16421	1	Generator fan blade 6KW (model 332)	
11	11339	1	Generator drive plate spacer	
12	16123	1	Plate, drive - SAE 6.5	
13	60410	6	Screw, M8x1.25x16 hx hd	
14	60029	6	Washer, split lock M8	
15	12916	1	Marathon, 6/8kw terminal block	

**Note:** Engine and generator parts used in all Magnum Products LLC equipment carry the Original Equipment Manufacturer (OEM) warranty unless otherwise stated. OEM warranty parts must be purchased through an OEM dealer. Please contact Magnum Products LLC with questions.

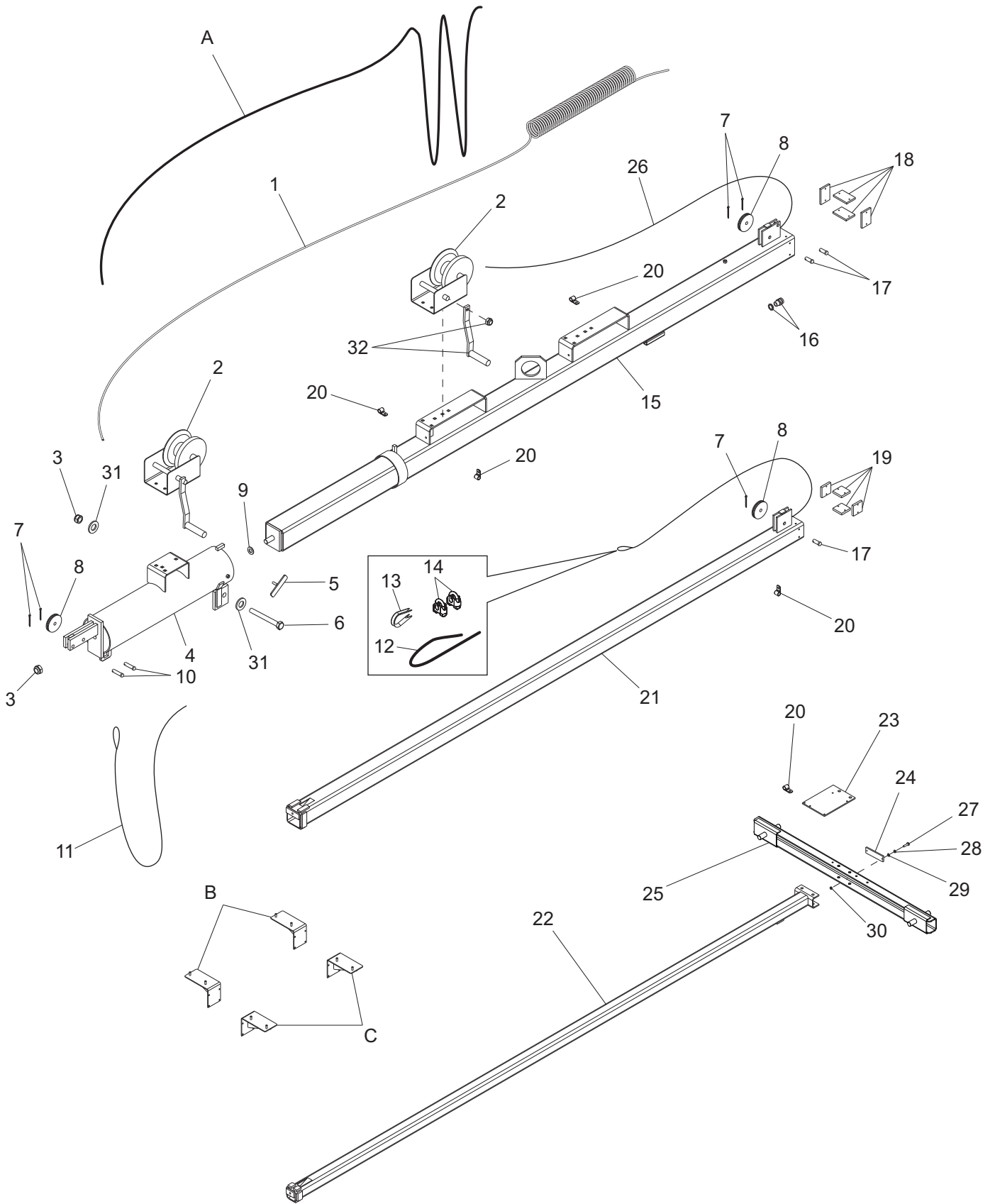
# 8 KW GENERATOR ASSEMBLY



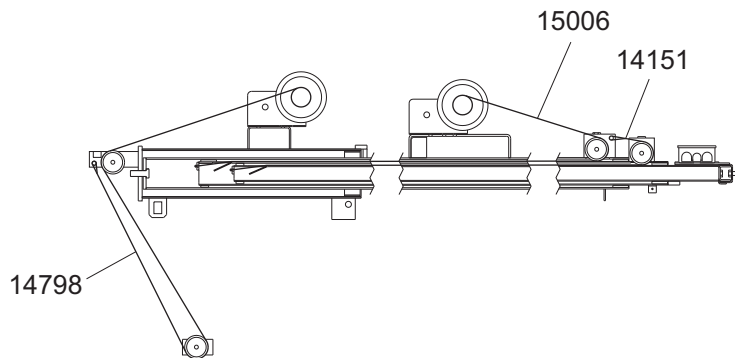
ITEM	PART	QTY	DESCRIPTION	NOTES
1	12736	1	Cover, generator box	
2	16395	2	Capacitor clamp	
3	15695	1	Capacitor, generator 45 $\mu$ F	
	15798	-	Capacitor, 50 $\mu$ F, 440VAC, 50/60 Hz	
	10733	-	Capacitor, 25 $\mu$ F 550V	
4	10486	1	Generator, 8kw - cap reg	
5	11338	1	Generator end cover	
6	15241	2	Compression mount, engine/gen	
7	15045	1	Generator mounting bar	
8	16134	1	Bearing, 6 kW	
9	11337	1	Generator O-ring	
10	16421	1	Generator fan blade	
11	11339	1	Generator drive plate spacer	
12	11336	6	Generator screw - .375-24x .875	
13	16123	1	Plate, drive	
14	60410	6	Screw, M8x1.25x16 hx hd	
15	60029	6	Washer, split lock M8	
16	12916	1	Marathon, 6/8kw terminal block	
--	15493	2	Diode, rotor	Not shown
--	15492	1	Suppressor	Not shown

**Note:** Engine and generator parts used in all Magnum Products LLC equipment carry the Original Equipment Manufacturer (OEM) warranty unless otherwise stated. OEM warranty parts must be purchased through an OEM dealer. Please contact Magnum Products LLC with questions.

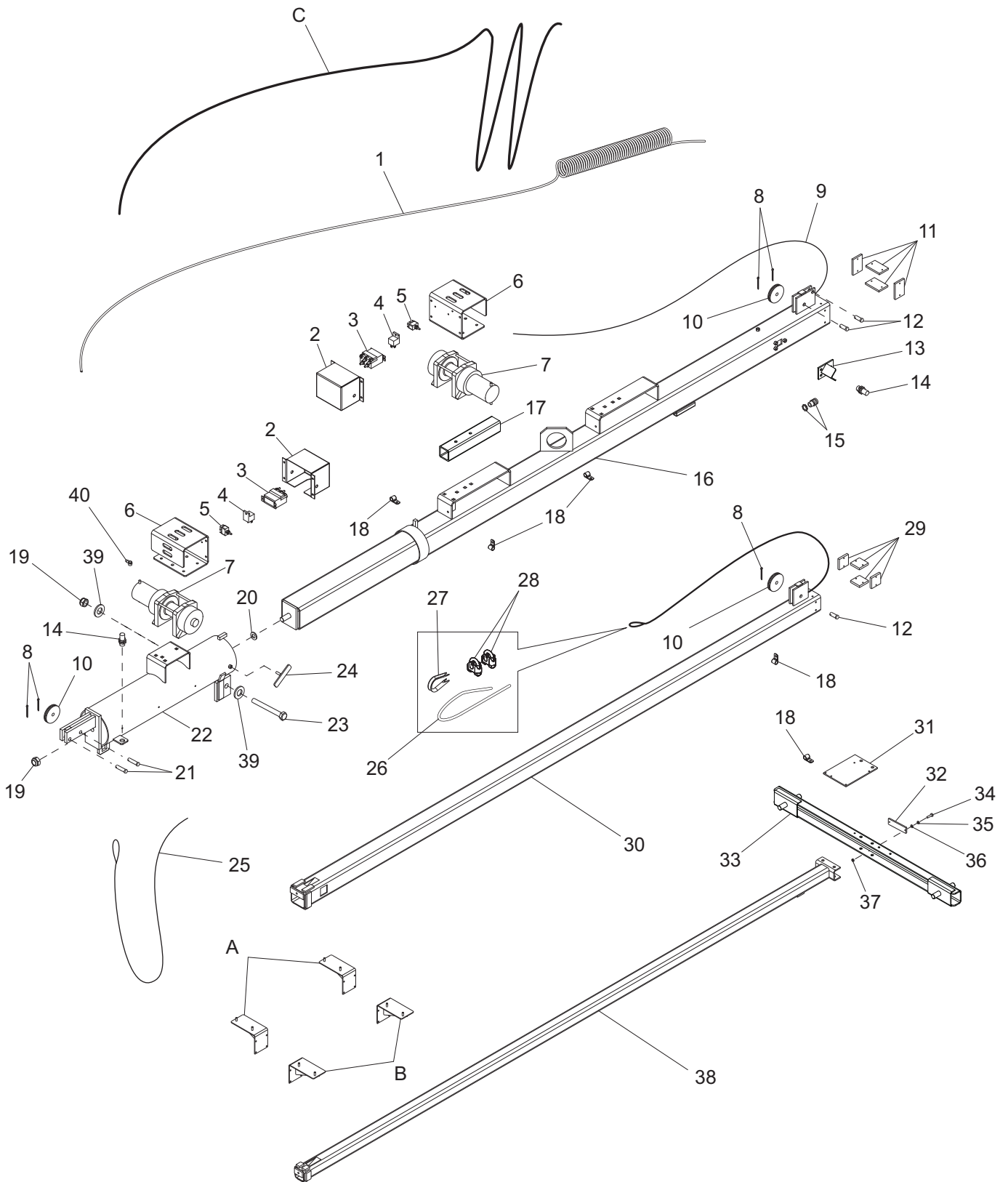
# MANUAL WINCH MAST ASSEMBLY



ITEM	PART	QTY	DESCRIPTION	NOTES
1	11954	1	Coil cord, mast	
2	16600	2	Winch, manual	
3	60584	2	Nut, .750-10 nylock G5 yellow zinc	
4	11902B	1	Weldment, mast tube	
5	11649Z	1	Weldment, t-bolt	
6	15292	1	Screw, .750-10x6.500 hx hd SS	
7	15380	4	Pin, cotter -.125x1.250	
8	14262	2	Sheave, 3 in.	
9	60247	1	Washer, flat .750	
10	14234	2	Pin, clevis .500 x 2.00	
11	14798	1	Cable, .188 in. x 16 ft. steel w/teardrop	
12	14151	1	Cable, .188 in. x 11 ft. steel w/swedge	
13	15003	1	Thimble, cable - .188	
14	15002	2	Clip, wire rope .188	
15	11933B	1	Weldment, mast - 4.00	
16	14871	1	Strain relief - .50 NPT, .50 cord	
17	15015	3	Pin, clevis .500 x 1.25	
18	15014	4	Shim, 2 x 3 x .281 GSM	
19	15013	4	Shim, 2 x 2 x .344 GSM	
20	16143	5	Clamp, tubing .500	
21	11934B	1	Weldment, mast - 3.00	
22	16257B	1	Weldment, mast - 2.00	
23	12095B	1	Bracket, junction box	
24	15829	1	Reflector, red	
25	13527B	1	Weldment, mast crossbar (3/4" studs)	
26	15006	1	Cable - .188 in. x 27 ft. steel w/swedge	
27	60397	1	Screw, 10-32X1.000 pan hd phil	
28	60252	2	Washer, split lock #10	
29	60237	2	Washer, flat #10	
30	14231	2	Nut, 10-32 hx	
31	60744	2	Washer, flat .750ID/1.25OD/.06th delrin	
32	15623	2	Winch handle, 9.00 in long	
A	15612	1	Cable, 16-7 cold mast drape	Option
B	13869B	2	Weldment, light storage - RH	Option
C	13870B	2	Weldment, light storage - LH	Option

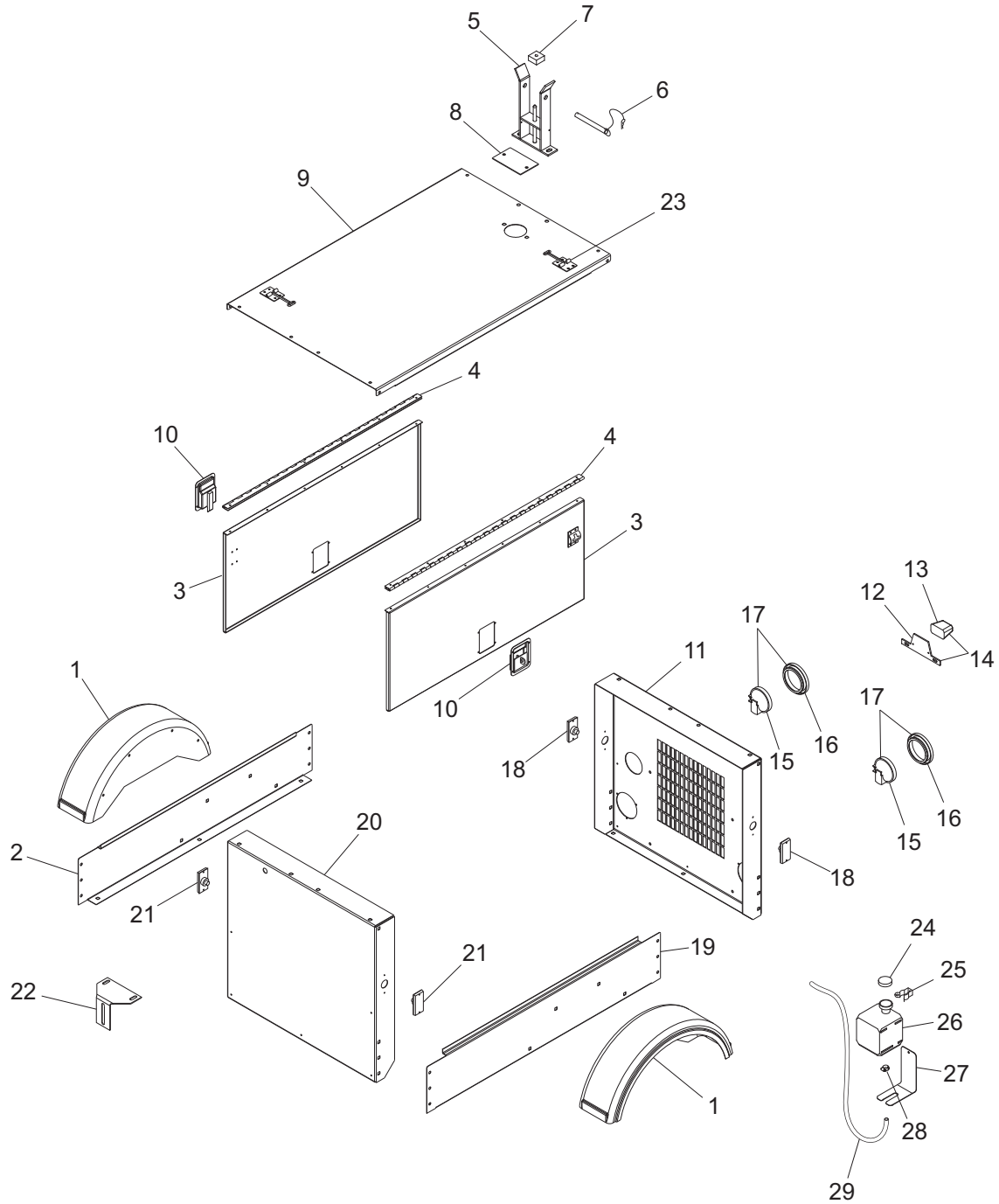


# ELECTRIC WINCH MAST ASSEMBLY



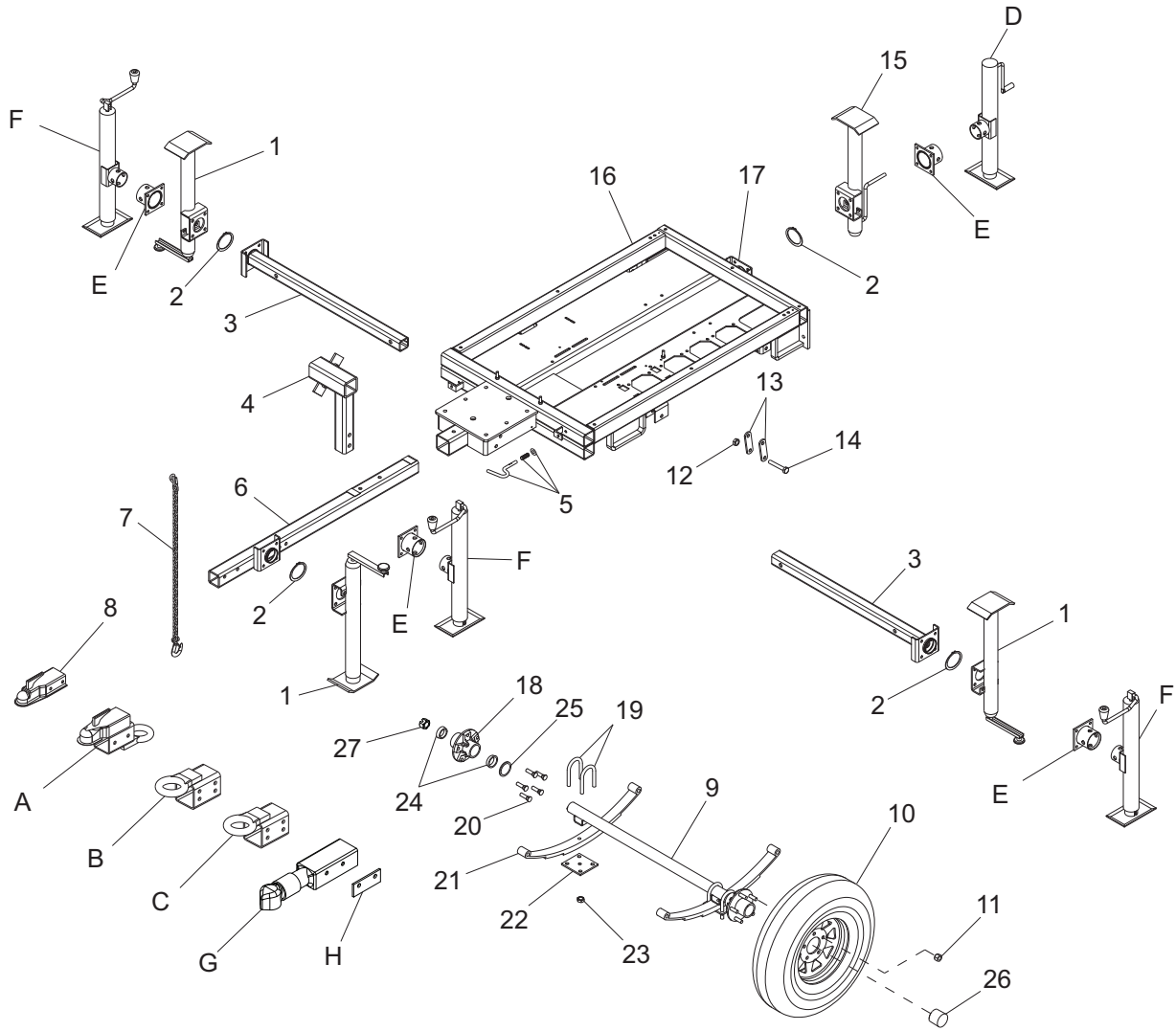
ITEM	PART	QTY	DESCRIPTION	NOTES
1	11954	1	Coil cord	
2	12875B	2	Cover, winch contactor	
3	11293	2	Contactora, electric winch - warn	
4	65049	2	Relay, 12V 30/40A N.O. w/diode	
5	65707	2	Switch, toggle - spring weatherproof	
6	12872B	2	Bracket, winch mounting	
7	12874	2	Winch, electric - 770 lb. hoist	
8	15380	5	Pin, cotter - .125x1.250	
9	15006	1	Cable, .188 in. x 27 ft. w/ball swedge	
10	14262	3	Sheave, 3 in.	
11	15014	4	Shim, 2 x 3 x .281 GSM	
12	15015	3	Pin, clevis .500 x 1.25	
13	13796B	1	Weldment, prox sensor brkt	
14	65511	2	Sensor, proximity	
15	14871	1	Strain relief- .50 NPT, .50 cord	
16	12085B	1	Weldment, 4.00 mast - Electric Winch	
17	11967B	1	Channel, electric winch mount	
18	16143	3	Clamp, tubing .500	
19	60584	2	Nut, .750-10 nylock G5 yellow zinc	
20	60247	1	Washer, flat .750	
21	14234	2	Pin, clevis .500 x 2.00	
22	12876B	1	Weldment, mast tube - Electric Winch	
23	15292	1	Screw, 750-10 x 6.50 hx hd SS	
24	11649Z	1	Weldment, t-bolt	
25	14798	1	Cable - .188 in. x 16 ft. steel w/teardrop	
26	14151	1	Cable - .188 in. x 11 ft. steel w/swedge	
27	15003	1	Thimble, cable - .188	
28	15002	2	Clip, wire rope - .188 single saddle	
29	15013	4	Shim, 2 x 2 x .344 GSM	
30	12084B	1	Weldment, 3.00 mast	
31	12095	1	Bracket, junction box	
32	15829	1	Reflector, red	
33	13527B	1	Weldment, mast crossbar (3/4" studs)	
34	60397	2	Screw, 10-32X1.000 pan hd phil	
35	60252	2	Washer, split lock #10	
36	60237	2	Washer, flat #10	
37	14231	2	Nut, 10-32 hx	
38	16257B	1	Weldment, mast - 2"	
39	60744	2	Washer, flat .750ID/1.25OD/.06th delrin	
40	12922	4	Boot, battery cable - red	
A	13869B	2	Weldment, light storage (RH)	Option
B	13870B	2	Weldment, light storage (LH)	Option
C	15612	33ft.	Cable, 16-7 cold mast drape	Option

# ENCLOSURE ASSEMBLY



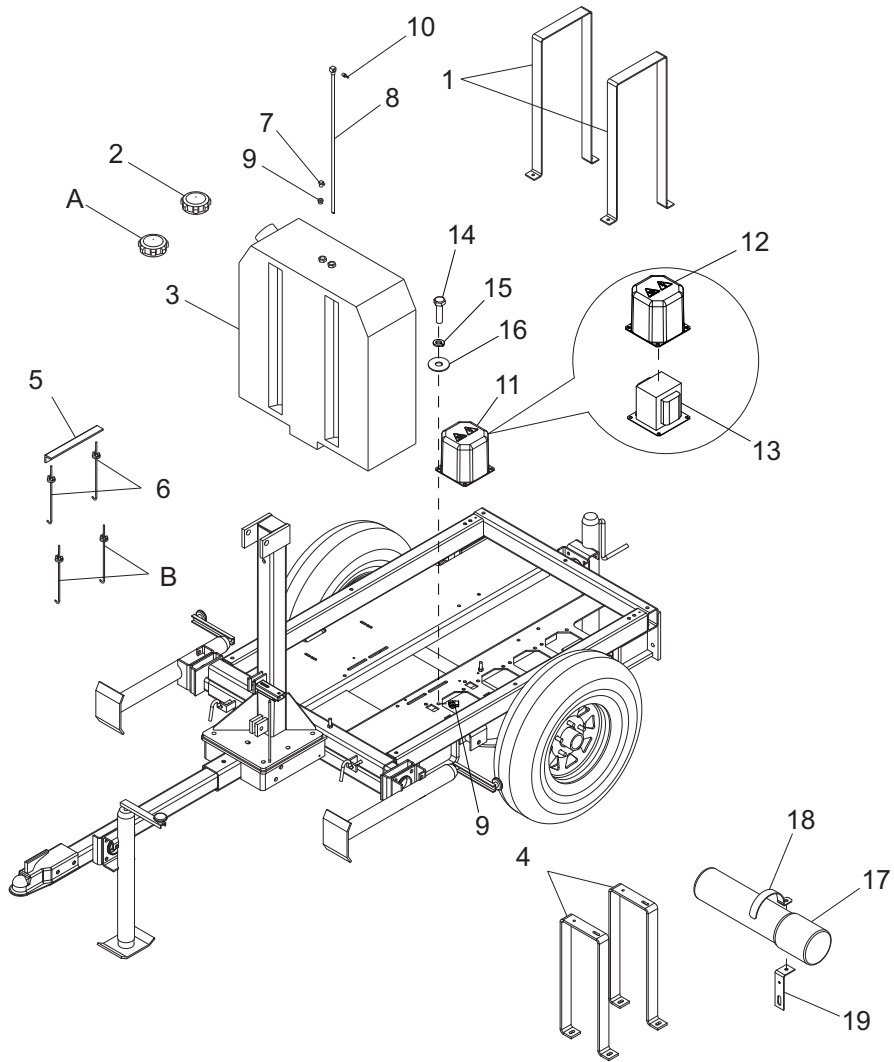
ITEM	PART	QTY	DESCRIPTION	NOTES
1	16560	2	Fender, plastic -13" tire	
2	12014W	1	Panel, side (R)	
3	11066W	2	Panel, door	
4	11095	2	Hinge, continuous - 43.00	
5	12344ZN	1	Weldment, cradle - common mast	
6	16099	1	Assembly, mast cradle pin	
7	11935	1	Pad, rubber - 2.00 X 2.00 X 1.00	
8	11096W	1	Panel, radiator access	
9	11062W	1	Panel, top	
10	15123	2	Latch, paddle	
11	11060W	1	Panel, rear	
12	10224	1	Bracket, license plate	
13	10225	1	Light, license bracket	
14	10223	1	Assembly, license plate light/bracket	
15	10220	2	Light, rear tail/turn MLT no grommet	
16	10221	2	Grommet, rear light, rubber 4.5"	
17	10219	2	Assembly, rear tail/turn light	
18	65406	2	Light, clearance maker - red	
19	12015W	1	Panel, side (L)	
20	11077W	1	Panel, front	
21	65407	2	Light, clearance marker amber	
22	14459B	1	Bracket, door adjusting	
23	12605	2	Door latch SS - T style	
24	19714	1	Cap, overflow bottle	
25	19726	1	Clamp, overflow bottle	
26	20287	1	Jug, overflow 2 qt (.5 gal)	
27	22419B	1	Bracket, support overflow jug .5 gal	
28	60777	1	Clamp, hose - .312 fuel hose crimp style	
29	19220	1	Hose, overflow	
--	14410	1	Assembly, overflow jug 1.5 qt.	Items 24-29

# FRAME ASSEMBLY



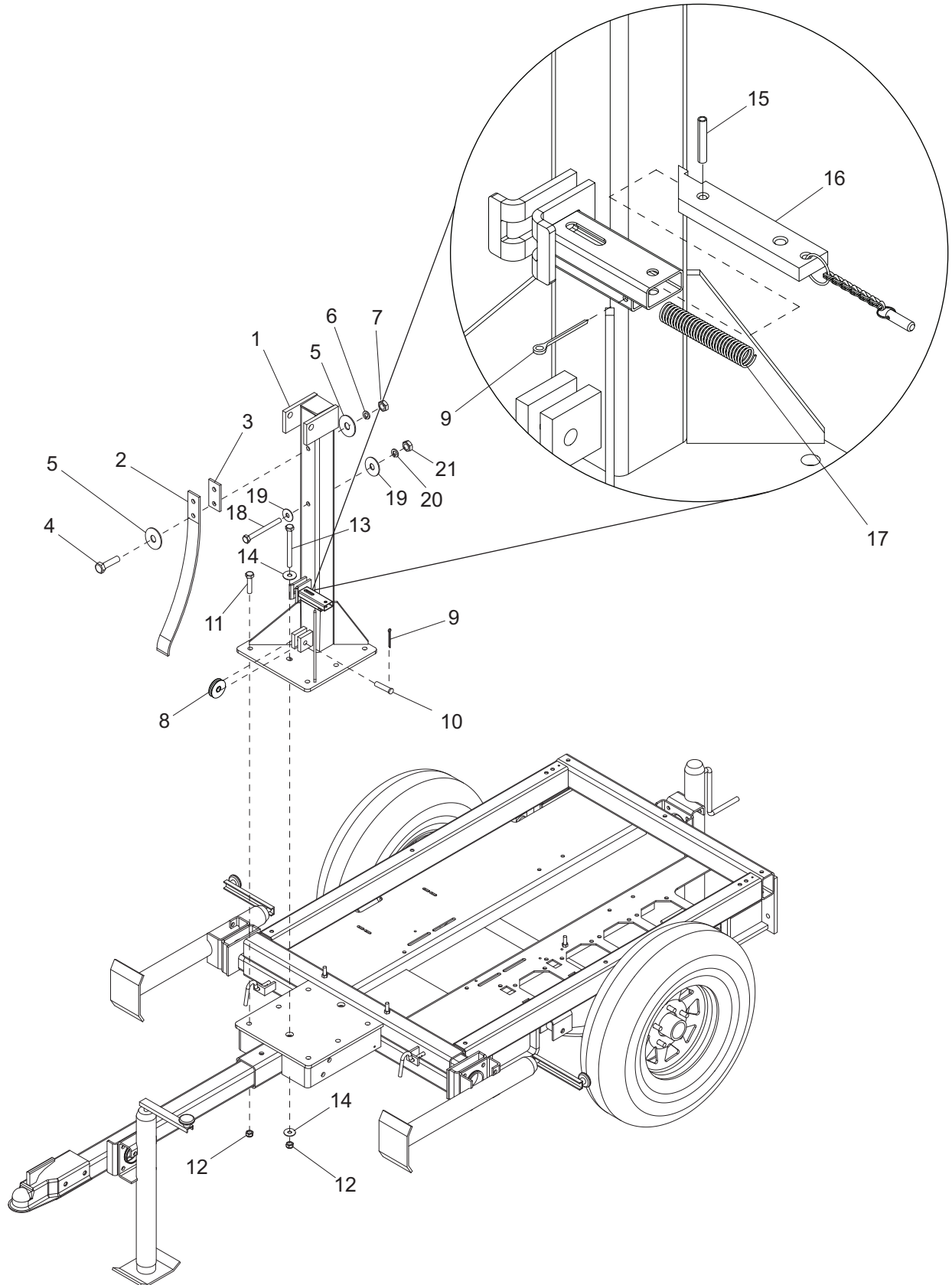
ITEM	PART	QTY	DESCRIPTION	NOTES
1	11682	3	Jack, top wind - 2000 lb.	
2	14326	4	Ring, retaining	
3	12431Z	2	Weldment, outrigger	
4	12235B	1	Weldment, spare tire holder	
5	14324	2	Kit, plunger	
6	12420B	1	Weldment, removable tongue	
7	23367	2	Chain, safety - 7,800 lbs. rated	
8	16830	1	Coupler, 2.00 ball/2.50 channel	
9	11100	1	Assembly, axle - 2200 lb.	Items 18-27
10	15976	2	Wheel, 13"	
11	60096	10	Nut, .500-20 wheel lug	
12	60504	6	Nut, .562-18 hx shackle lock	
13	19637	4	Plate, shackle bracket	
14	60503	6	Screw, .562-18 hx shackle	
15	11681	1	Jack, side wind - 2000 lb.	
16	13819B	1	Weldment, LT chassis	
17	11221	1	Bracket, jack mounting - 1.25 deep	
18	11206	2	Hub w/studs and outer races	
19	11201	4	U-bolt 2200 lb.	
20	11207	10	Wheel stud .500-20	
21	16679	2	Spring - 25 in. 2200 lb.	
22	11202	2	Tie-plate 2200 lb.	
23	11203	8	Nut (U bolt) 2200 lb.	
24	11511	4	Roller bearing	
25	13000	2	Seal - 2200 lb.	
26	12460	2	Wheel bearing cap	
27	12308	2	Spindle nut	
A	16741B	1	Weldment, combo hitch - 2.50 tongue	Option
B	16835B	1	Weldment, lunette ring - 3.00 ID	Option
C	16999B	1	Weldment, lunette ring - 2.50 ID	Option
D	13050	1	Jack assembly, 3000# side wind	Option
E	11965Z	4	Weldment, jack adapter	Option
F	13051	3	Jack assembly, 3000# top wind	Option
G	13003B	1	Coupler, 2.00 ball/3/00 channel	Option: Bulldog hitch
H	12155B	1	Spacer, coupler - black	Option: Bulldog hitch

# COMPONENTS TO FRAME ASSEMBLY



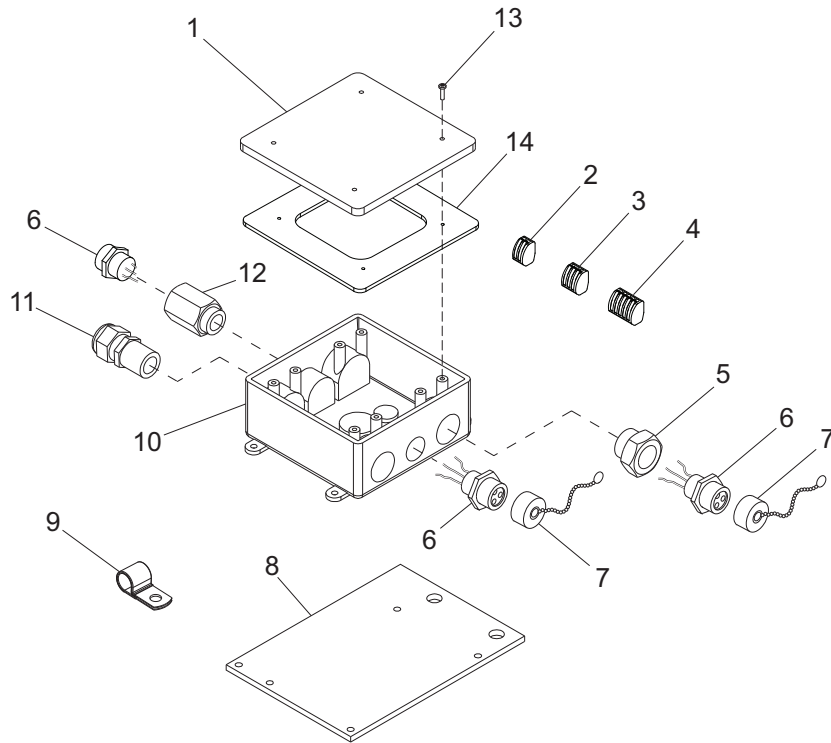
ITEM	PART	QTY	DESCRIPTION	NOTES
1	11065B	2	Bracket, fuel tank support	
2	12080	1	Cap, fuel tank vented - 3.5"	
3	11054	1	Tank, fuel 30 gal.	
4	10692B	2	Bracket, control box mounting	
5	12924B	1	Angle, battery hold-down	
6	14146	2	Bolt, J - .250-20 x 10.00	
7	16271	1	Fitting, .250NPT X .188 hose barb	
8	11083	1	Fuel pick-up tube - 30.75 in.	
9	16270	1	Fitting, .375MNPT to .250 FNPT straight	
10	15142	1	Fitting, strt, .250NPT X .312 hose barb	
11	10656	4	Assy, transformer-can and base	
12	10931	4	Can, transformer - ballast box	
13	10930	4	Transf. & base brkt w/ str relief	
14	60028	16	Screw, .312-18 x 1.00 std hex	
15	60271	16	Washer, .312-18 split lock	
16	60243	16	Washer, .312-18 flat	
17	11121	1	Tube, black manual holder 14"	
18	10241	1	Clamp, 2.5" - manual holder	
19	11131B	1	Bracket, manual holder	Attached to back of control box
A	12137	1	Cap, fuel tank-vented 3.5" grn w/lanyard	Option
B	60984	2	Bolt, J- .250-20 X 7.00	Option: gel cell battery

# MAST POST ASSEMBLY



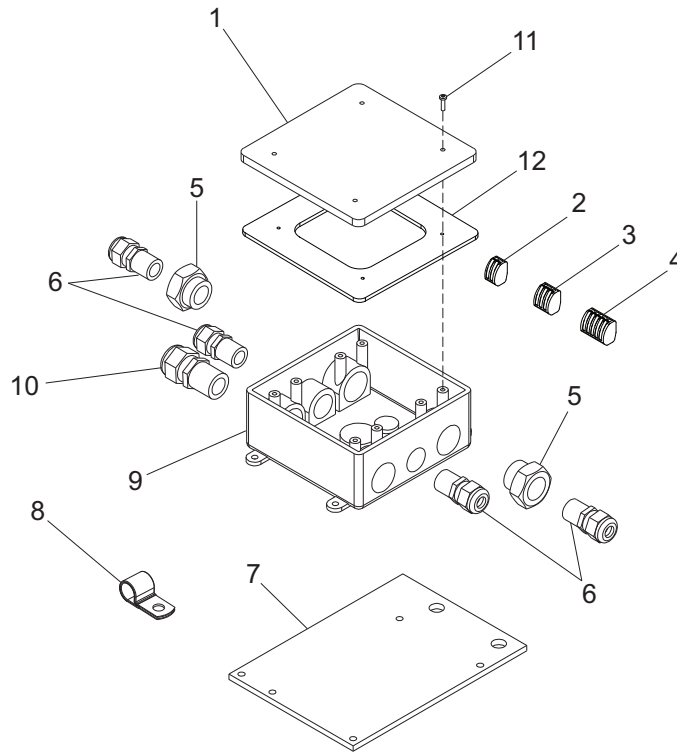
ITEM	PART	QTY	DESCRIPTION	NOTES
1	11057B	1	Weldment, mast post	
2	14845B	1	Spring, kickback - 50lb, black	
3	11554Z	1	Spacer plate - kick-back spring	
4	60732	2	Screw, .500-13x5.500 std hex 18-8 ss	
5	60699	4	Washer, .500 flat 1.070/.080 18-8 ss	
6	60702	2	Washer, .500 split lock 18-8 ss	
7	14229	2	Nut, .500-13 hex zc	
8	14261	1	Sheave - 2 in.	
9	15380	2	Pin, cotter - .125x1.250	
10	15015	1	Pin, clevis- .500 dia x 1.25	
11	60683	6	Screw, .500-13x1.500 std hex 18-8 ss	
12	60307	8	Nut, .500-13 nytk G5	
13	60659	2	Screw, .500-13x5.000 std hex G5	
14	60416	4	Washer, .500 flat 1.375/.090	
15	15165	1	Pin, roll - .250x1.250 plain	
16	11215	1	Assy, latch bar	
17	14275	1	Spring, compression - .60.x2.75x.054	

# MAST JUNCTION BOX ASSEMBLY - QUICK DISCONNECT LIGHTS



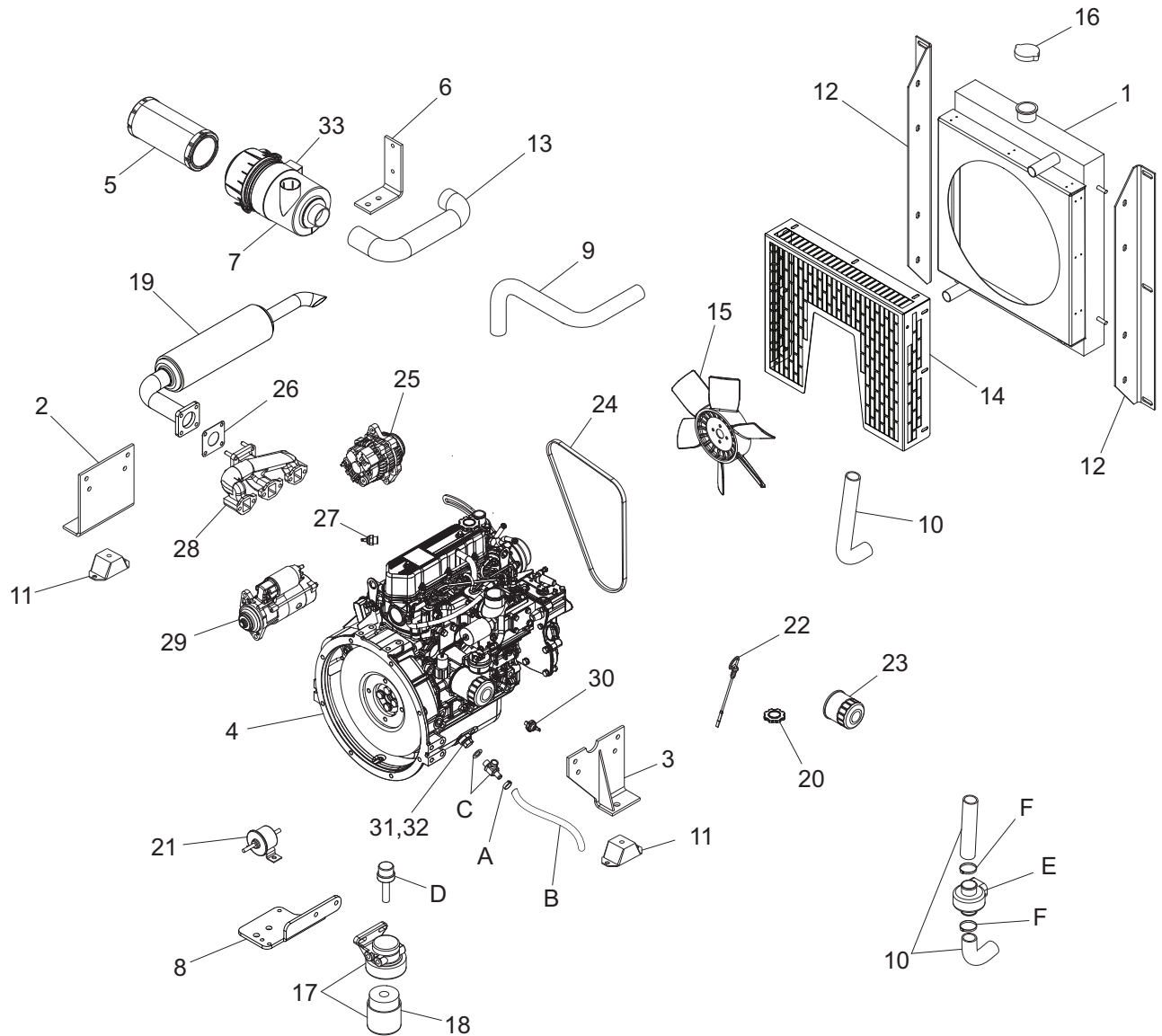
ITEM	PART	QTY	DESCRIPTION	NOTES
1	12109	1	Box cover, 2-gang plastic	
2	66100	4	Connector, 2 pos. Wago	
3	66101	2	Connector, 3 pos. Wago	
4	66102	1	Connector, 5 pos. Wago	
5	60755	2	Fitting, .750MNPT x .500FNPT nylon	
6	15403	4	Connector, quick disconnect (female)	
7	15404	4	Cap, receptacle w/chain	
8	12095B	1	Bracket, junction box	
9	16143	1	Clamp, tubing .500	
10	12094	1	Box, junction	
11	14656	1	Strain relief, .750NPT water tight	
12	12713	1	Fitting, adapter-1/2"-14 M to 1/2"-14 F	
13	60424	4	Screw, 6-32x.750 pan phil G2 ZC	
14	13749	1	Gasket, junction box - HFI 281000	
-	11957	-	Assembly, mast junction box	

## MAST JUNCTION BOX ASSEMBLY - HARD WIRED LIGHTS



ITEM	PART	QTY	DESCRIPTION	NOTES
1	12109	1	Box cover, 2-gang plastic	
2	66100	4	Connector, 2 pos. Wago	
3	66101	2	Connector, 3 pos. Wago	
4	66102	1	Connector, 5 pos. Wago	
5	60755	2	Fitting, .750MNPT x .500FNPT nylon	
6	15864	4	Strain relief, .500NPT water tight	
7	12095B	1	Bracket, junction box	
8	16143	1	Clamp, tubing .500	
9	12094	1	Box, junction	
10	14656	1	Strain relief, .750NPT water tight	
11	60424	4	Screw, 6-32X.750 pan phil G2 ZC	
12	13749	1	Gasket, junction box - HFI 281000	
-	11789	-	Assembly, mast junction box	

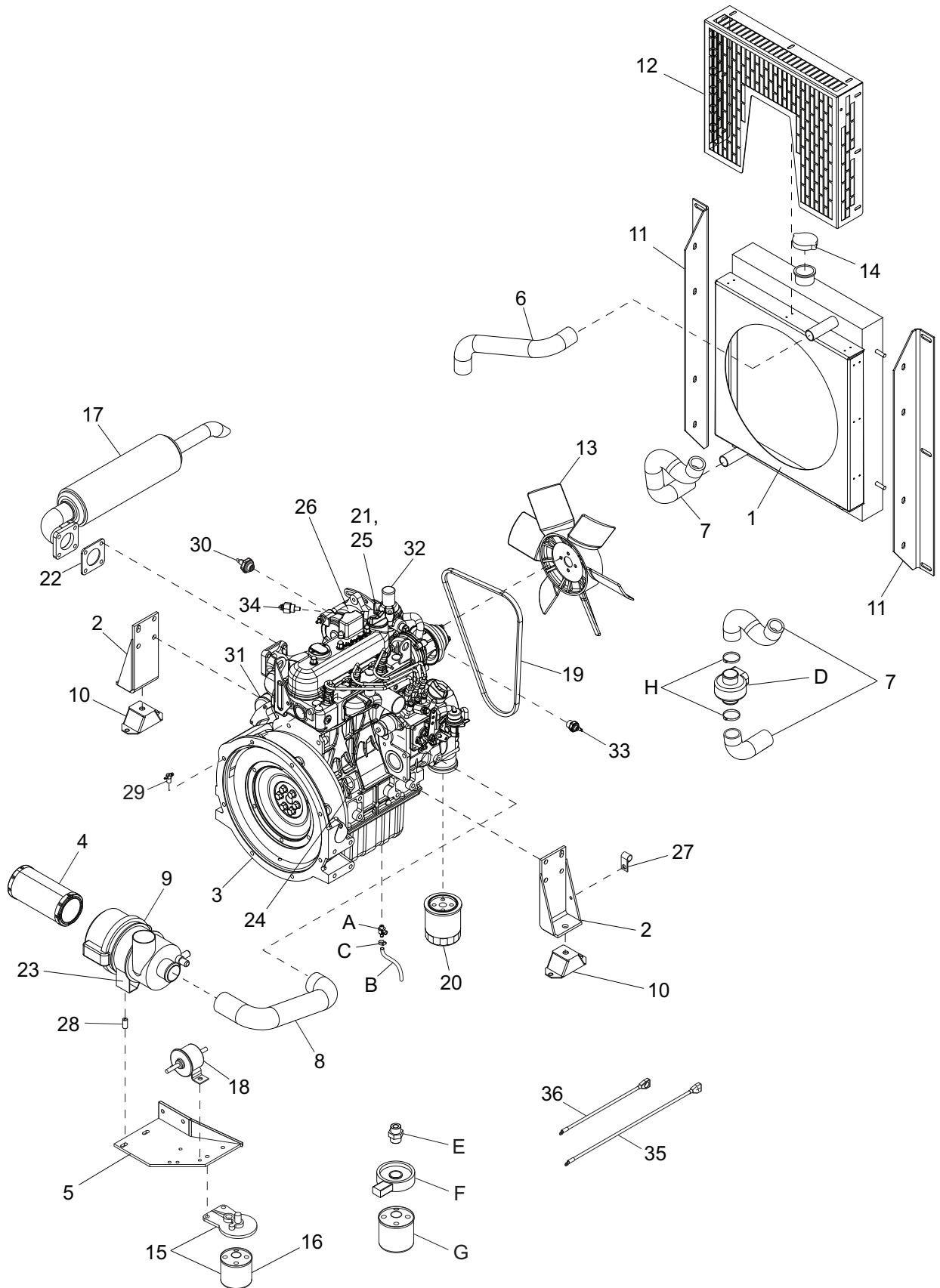
# MITSUBISHI ENGINE ASSEMBLY



**Note:** Engine and generator parts used in all Magnum Products LLC equipment carry the Original Equipment Manufacturer (OEM) warranty unless otherwise stated. OEM warranty parts must be purchased through an OEM dealer. Please contact Magnum Products LLC with questions.

ITEM	PART	QTY	DESCRIPTION	NOTES
1	13924	1	Radiator w/fan guard - welded	
2	16554B	1	Weldment, engine mount - LH	
3	16553B	1	Weldment, engine mount - RH	
4	13046	1	Engine, Mitsubishi - L3E int. Tier IV	
5	16444	1	Element, air filter	
6	16551B	1	Bracket, air cleaner	
7	16443	1	Filter, air with bracket	
8	12838B	1	Bracket, fuel filter/pump	
9	16687	1	Hose, radiator upper	
10	16688	1	Hose, radiator lower	
11	15241	4	Mount, compression	
12	11135B	2	Bracket, radiator	
13	16589	1	Hose, air cleaner	
14	11413	1	Guard, fan	
15	16742	1	Fan, engine	
16	19219	1	Cap, pressure radiator	
17	17641	1	Fuel filter head & element (new)	Start SN: 1003181
	16685	1	Fuel filter head & element	End SN: 1003180
18	17647	1	Element, fuel filter (new)	Start SN: 1003181
	16686	1	Element, fuel filter	End SN: 1003180
19	13710	1	Muffler, engine	
20	11147	1	Cap, oil filler	
21	13278	1	Fuel pump, electric	
22	11148	1	Dipstick, engine oil	
23	16691	1	Filter, oil	
24	16692	1	V-belt, alternator	
25	16743	1	Alternator, Mitsubishi	
26	11042	1	Gasket, exhaust manifold	
27	16678	1	Switch, coolant temperature	
28	12529	1	Manifold, exhaust	
29	16833	1	Starter assy, engine	
30	16677	1	Switch, oil pressure	
31	12888	1	Plug, oil drain	
32	12889	1	Gasket, oil drain	
33	16445	1	Bracket, air cleaner housing	
--	16683	1	Solenoid, fuel shut-down	Not shown
--	16693	3	Glow plug, engine	Not shown
--	15074	1	Cable, battery red 38"	Not shown
--	12568	1	Cable, battery black 27"	Not shown
--	16744	1	Water pump, Mitsubishi	Not shown
--	12213	1	Mitsubishi, gasket, water pump	Not shown
--	16745	1	Thermostat, Mitsubishi	Not shown
--	12214	1	Gasket, thermostat	Not shown
--	12959	1	Mitsubishi, gasket, intake manifold L3E	Not shown
--	12214	1	Mitsubishi, gasket, thermostat	Not shown
--	16874	1	Assy, engine harness	Not shown
--	11366	1	Solenoid, starter Mitsubishi	Not shown
--	11367	1	Manifold stud	Not shown
A	60777	1	Clamp, hose - .312 fuel hose crimp style	Option
B	12227	1	Hose, oil drain .375 X 20, 30R7	Option
C	60766	1	Valve, drain 18MM-1.5 w/nipple	Option
D	13876	1	Kit, heater - fuel filter	Option
E	65649	1	Heater, engine - low rad hose	Option
F	62245	2	Clamp, hose - constant torque .813-1.75	Option
--	10699	1	Cable, battery - 24" 4ga blk- 3/8" lug	Option: Batt. disc. - Not Shown
--	10386	1	Belt, cold weather - Mitsu 6KW & 8KW	Option: Not Shown

# KUBOTA ENGINE ASSEMBLY

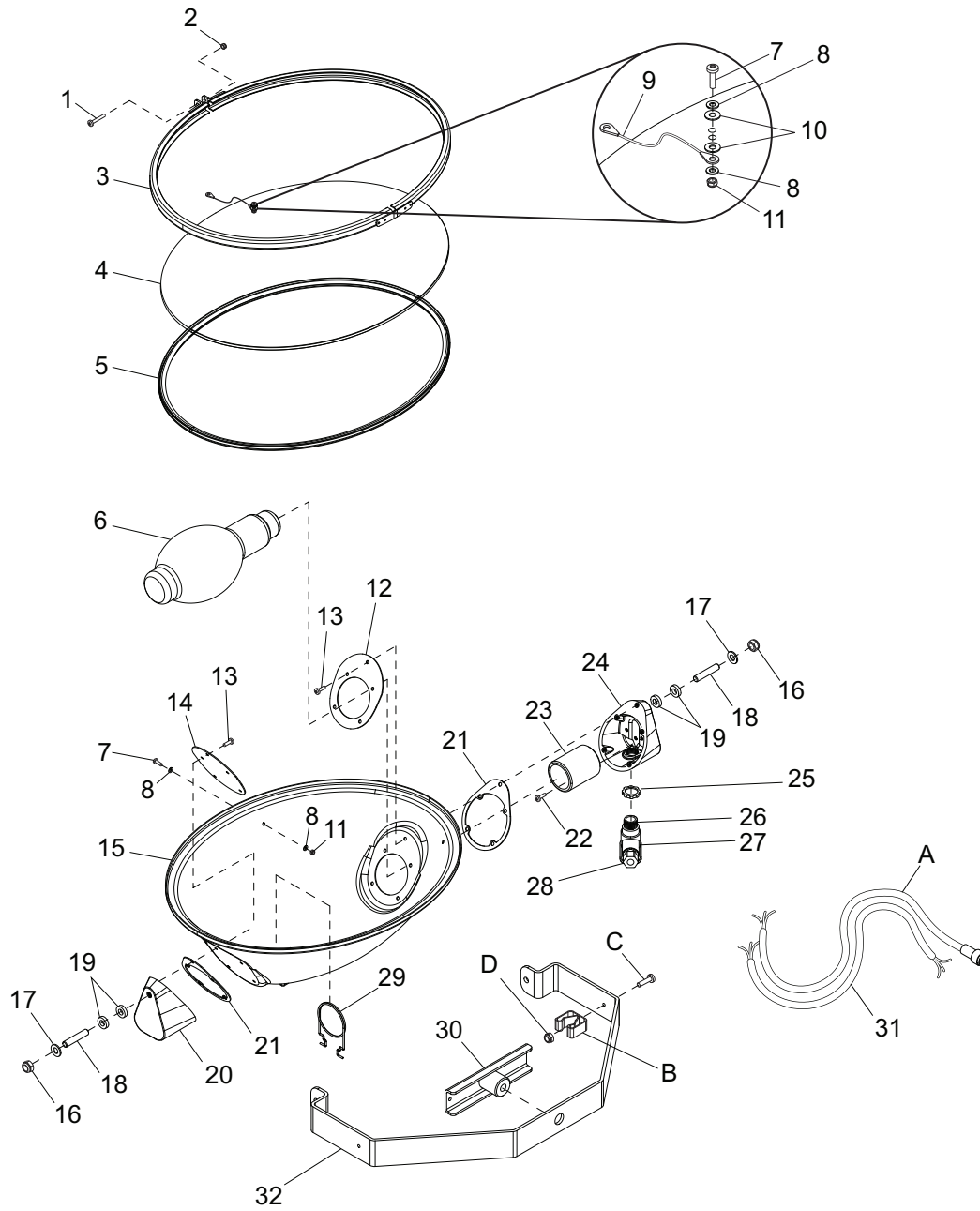


**Note:** Engine and generator parts used in all Magnum Products LLC equipment carry the Original Equipment Manufacturer (OEM) warranty unless otherwise stated. OEM warranty parts must be purchased through an OEM dealer. Please contact Magnum Products LLC with questions.

ITEM	PART	QTY	DESCRIPTION	NOTES
1	13924	1	Radiator w/ fan guard	
2	12338B	2	Weldment, engine mount	
3	13310	1	Engine, Kubota D1005	MLT3060K Start SN: 1003282
	12286	1	Engine, Kubota D905	MLT3060K End SN: 1003281
	13281	1	Engine, Kubota D1105	MLT3080K
4	16444	1	Element, air filter	
5	13483B	1	Weldment, filter bracket	
6	16687	1	Hose, radiator upper	
7	12350	1	Hose, radiator lower	
8	16589	1	Hose, air cleaner	
9	16443	1	Filter, air with bracket	
10	15241	2	Compression mount	
11	11683B	2	Bracket, radiator	
12	11413B	1	Fan Guard	
13	15495	1	Kubota pusher fan	
14	19219	1	Cap, pressure radiator 14 psi	
15	13481	1	Kubota fuel filter assembly	
16	13515	1	Fuel filter element	
17	15021	1	Muffler, engine	
18	13278	1	Kubota, fuel pump, electric	
19	11628	1	Kubota V-belt	
20	10775	1	Filter, oil	D1005 & D1105 Engines
	15146	1	Filter, oil	D905 Engine
21	SEE NOTE	1	Cap, oil filler	
22	11042	1	Gasket, exhaust manifold	
23	16445	1	Bracket, air cleaner housing	
24	12483	1	Dipstick, engine oil	
25	SEE NOTE	1	O-ring, oil cap	
26	12486	1	Alternator	
27	60649	2	Clamp, tubing - .750 heavy duty	
28	41235B	2	Spacer - .75OD x .375ID x 1.00 long	
29	13526	1	Kubota, joint eye, double port	
30	15375	1	Switch, oil pressure	
31	SEE NOTE	1	Starter, engine	
32	SEE NOTE	1	Thermostat assy	
33	14099	1	Switch, coolant temperature	
34	12873	1	Sender, coolant temp - .375NPT	
35	15074	1	Cable, battery red 38"	
36	15073	1	Cable, battery black 24"	
--	SEE NOTE	3	Glow plug, engine	Not shown
--	SEE NOTE	1	Kubota, water pump	Not shown
--	SEE NOTE	1	Kubota, water pump gasket	Not shown
--	65996	1	Assy, engine harness	Not shown
A	60774	1	Valve, drain 22MM-1.5 w/nipple	Option: oil drain
B	12227	1	Hose, oil drain .375 x 20, 30R7	Option:oil drain
C	60777	1	Clamp, hose - .312 fuel hose crimp style	Option: oil drain
D	65649	1	Heater, engine - lower radiator hose	Option
E	10407	1	Adapter, heater element	Option: heated fuel filter
F	13682	1	Heater, fuel filter	Option: heated fuel filter
G	13515	1	Fuel filter element	Option: heated fuel filter
H	62245	2	Clamp, hose - constant torque .813-1.75	Option
--	10699	1	Cable, battery - 24" 4ga blk 3/8" lug	Option: batt disc. - not shown

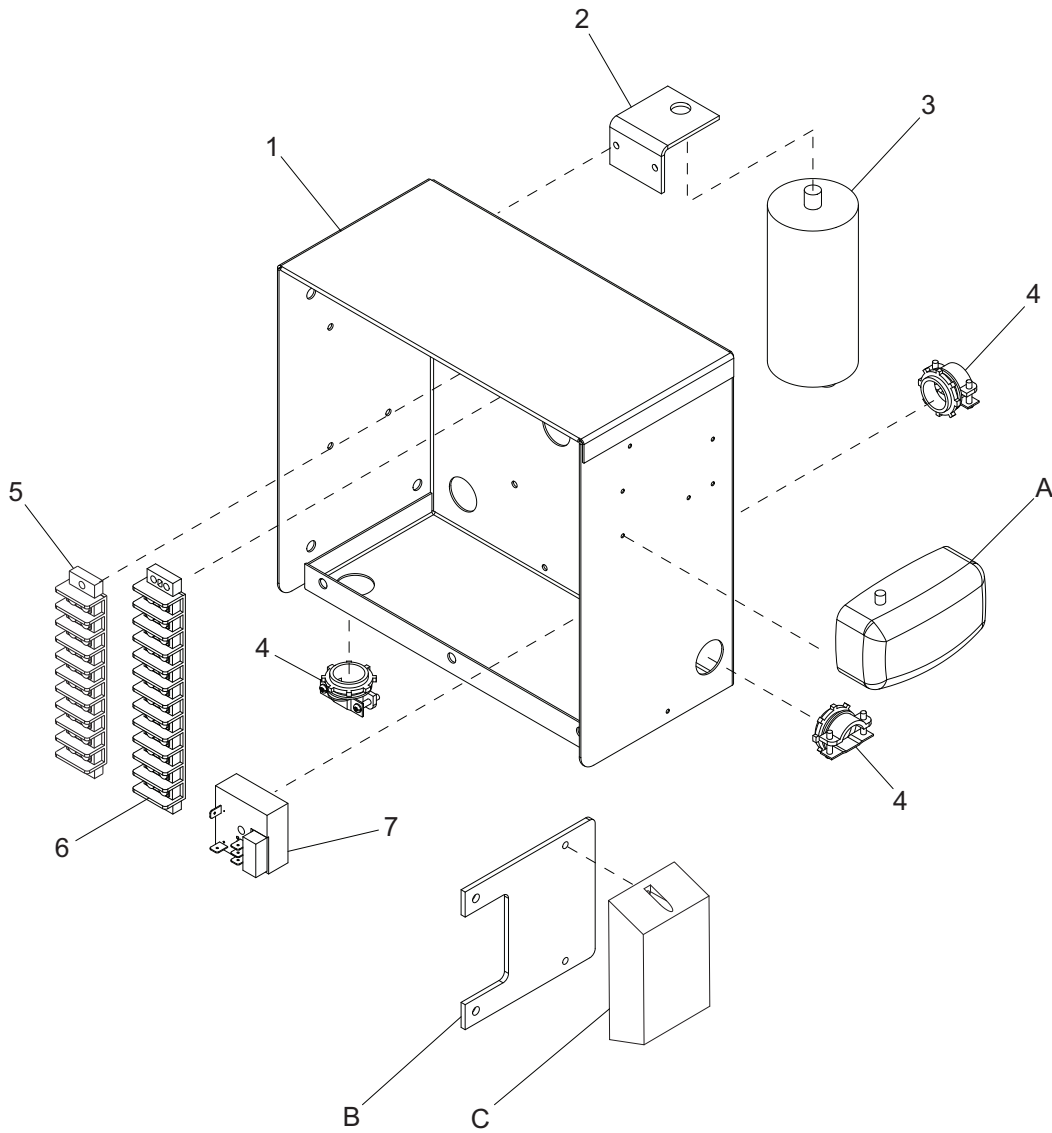
**Note:** Some Kubota engine parts are serial number specific. Please contact **Kubota Engine America Corp.** or the **Magnum Products Technical Service Department** at 1-800-926-9768 for information regarding engine parts.

# OVAL LIGHT ASSEMBLY



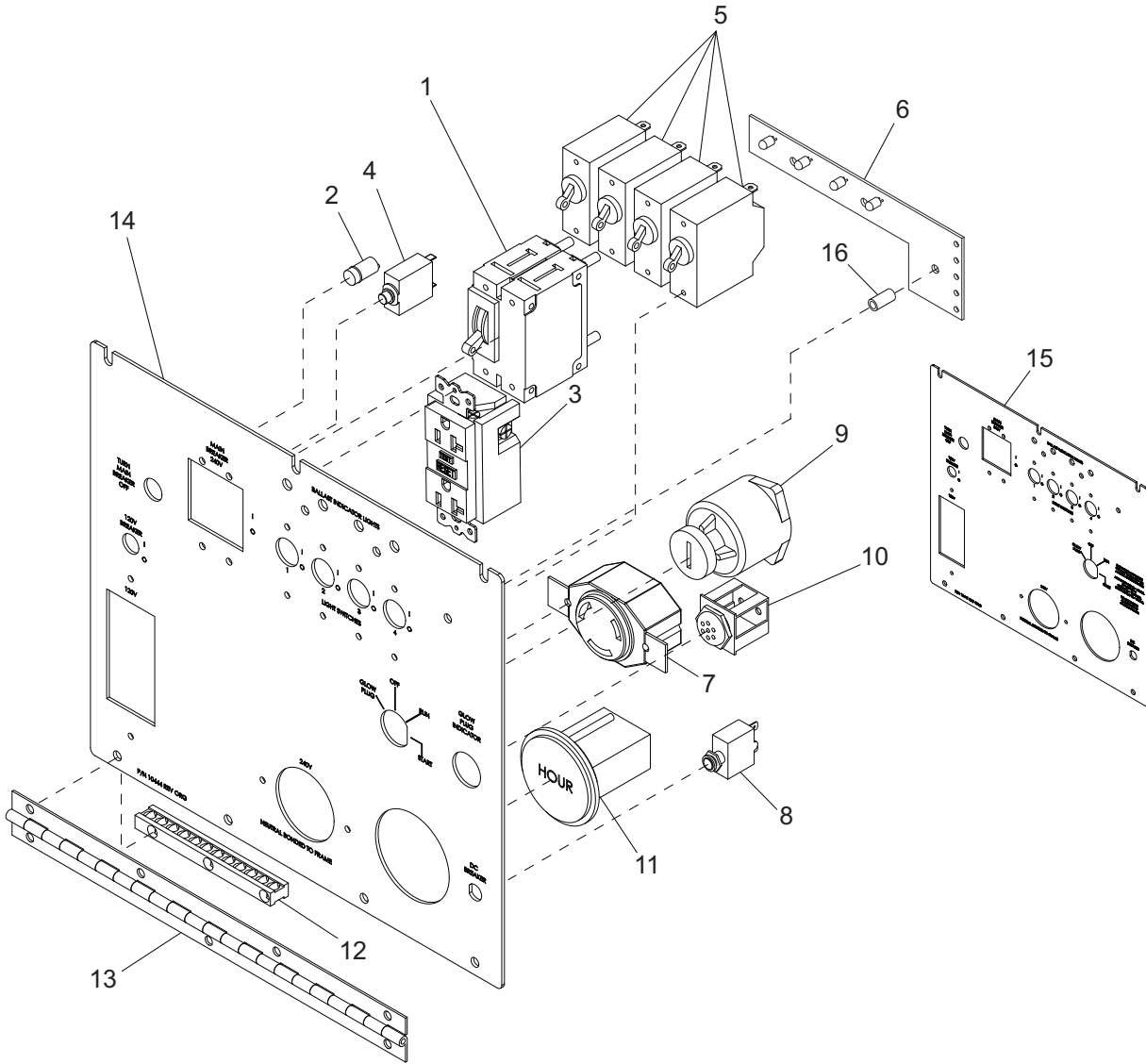
ITEM	PART	QTY	DESCRIPTION	NOTES
1	60304	1	Screw, M5 x 25 pan hd phillips	
2	60447	1	Nut, M5 nylock	
3	13367	1	Assembly, aluminum ring	
4	13369	1	Lens, glass oval	
5	13373	1	Gasket, lens oval	
6	11391	1	Bulb, 1000W MH short length	
7	13399	2	Screw, M4 x 18 pan hd phillips	
8	60067	4	Washer, #10 flat .435/.060 SS	
9	13370	1	Assembly, tether	
10	13372	2	Washer, #4 nylon	
11	60051	2	Nut, M4 nylock	
12	13376	1	Bracket, socket end plate	
13	13388	10	Screw, M5 x 12 slotted hex w/flange	
14	13377	1	Bracket, end plate	
15	13366	1	Housing	
16	60307	2	Nut, 500-13 nyk G5 ZC	
17	60309	2	Washer, .500 flat 1.060/.090 ZC SAE	
18	13392	2	Stud, trunnion	
19	13390	4	Washer, nylon (for part number 13392)	
20	13374	1	Support, housing/trunnion	
21	13378	2	Gasket, silicone	
22	13393	2	Screw, M5 x 12 phillips green	
23	13381	1	Socket, bulb	
24	13375	1	Support, housing/trunnion	
25	15861	1	Nut, special, .500 NPT lock (LN101SC)	
26	13386	1	Fitting, nipple	
27	13387	1	Connector, weather tight	
28	15864	1	Strain relief, .50 NPT watertight .270/.464 ID	
29	13892	1	Support, bulb - oval light	
30	13403	1	Handle, T - oval light (wing nut)	
31	13438	1	Cord, power hard wired	
32	13368	1	Trunnion, oval light	
--	13311	4	Assy, light fixture - 1000Whard wired	Items 1 - 32
A	13383	1	Cord, power quick disconnect	Option
B	19041	1	Clip, spring holder	Option
C	60398	1	Screw, 10-32X.500 pan phil18-8 ss	Option
D	60061	1	Nut, 10-32 nyk G5	Option
--	13601	4	Assy, light fixture/quick disconnect cord	Option

# CONTROL BOX ASSEMBLY



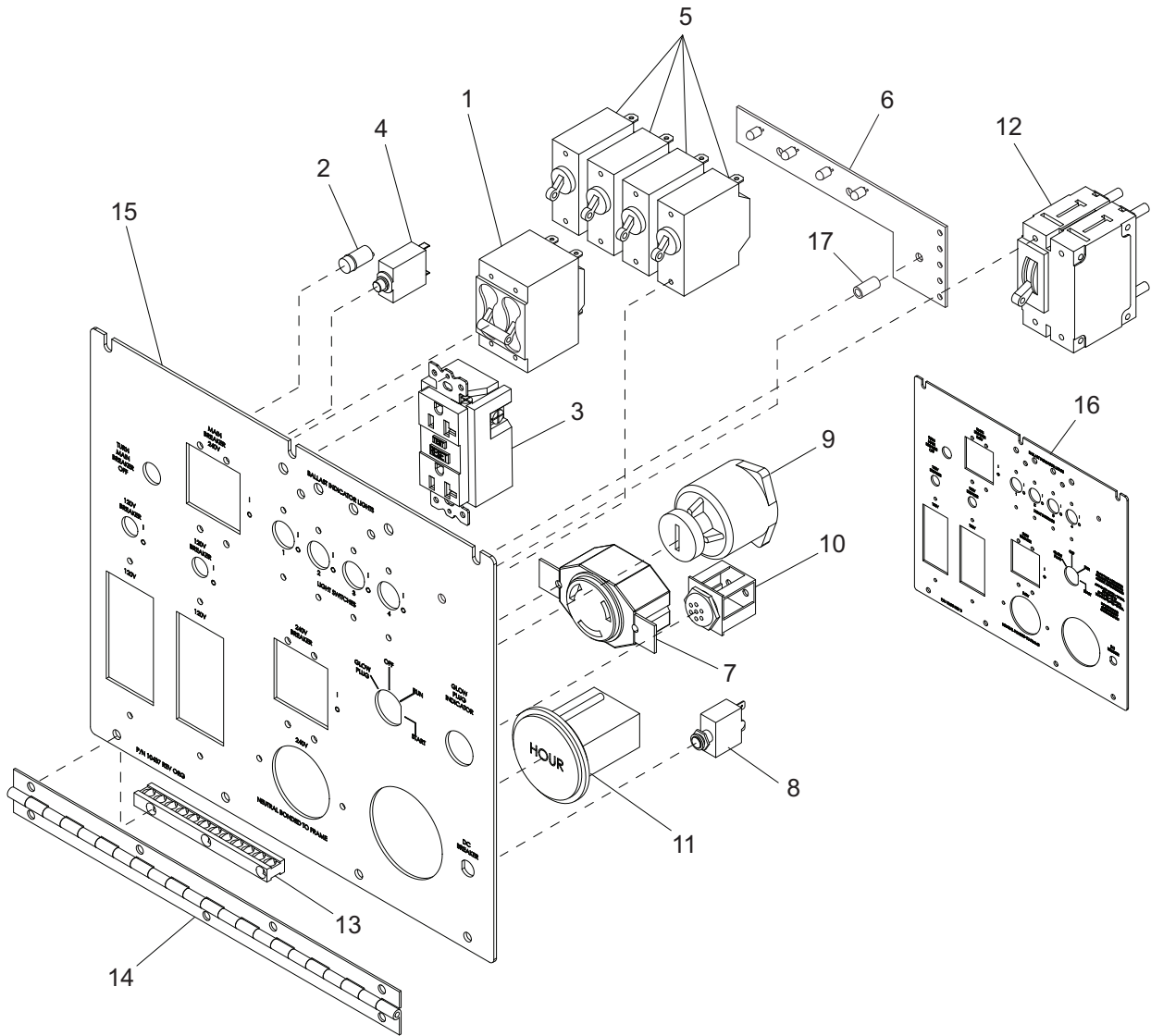
ITEM	PART	QTY	DESCRIPTION	NOTES
1	13666B	1	Box, control	
2	13690B	2	Bracket, capacitor	
3	65959	2	Capacitor, dual 24uF sealed stud mount	
4	14219	6	Strain relief- .75 romex w/ nut	
5	14203	1	Block, terminal - 10 pos	
6	14139	1	Block, terminal - 12 pos	
7	14201	1	Relay, 10A spdt 12VDC time delay-15 sec	
A	11947	1	Light, interior with switch	Option
B	12429B	1	Bracket, battery charger - 2 amp, 3 stage	Option
C	65326	1	Charger, battery - 2 amp, 3 stage	Option

# CONTROL PANEL ASSEMBLY - MLT3060M/MLT3060K



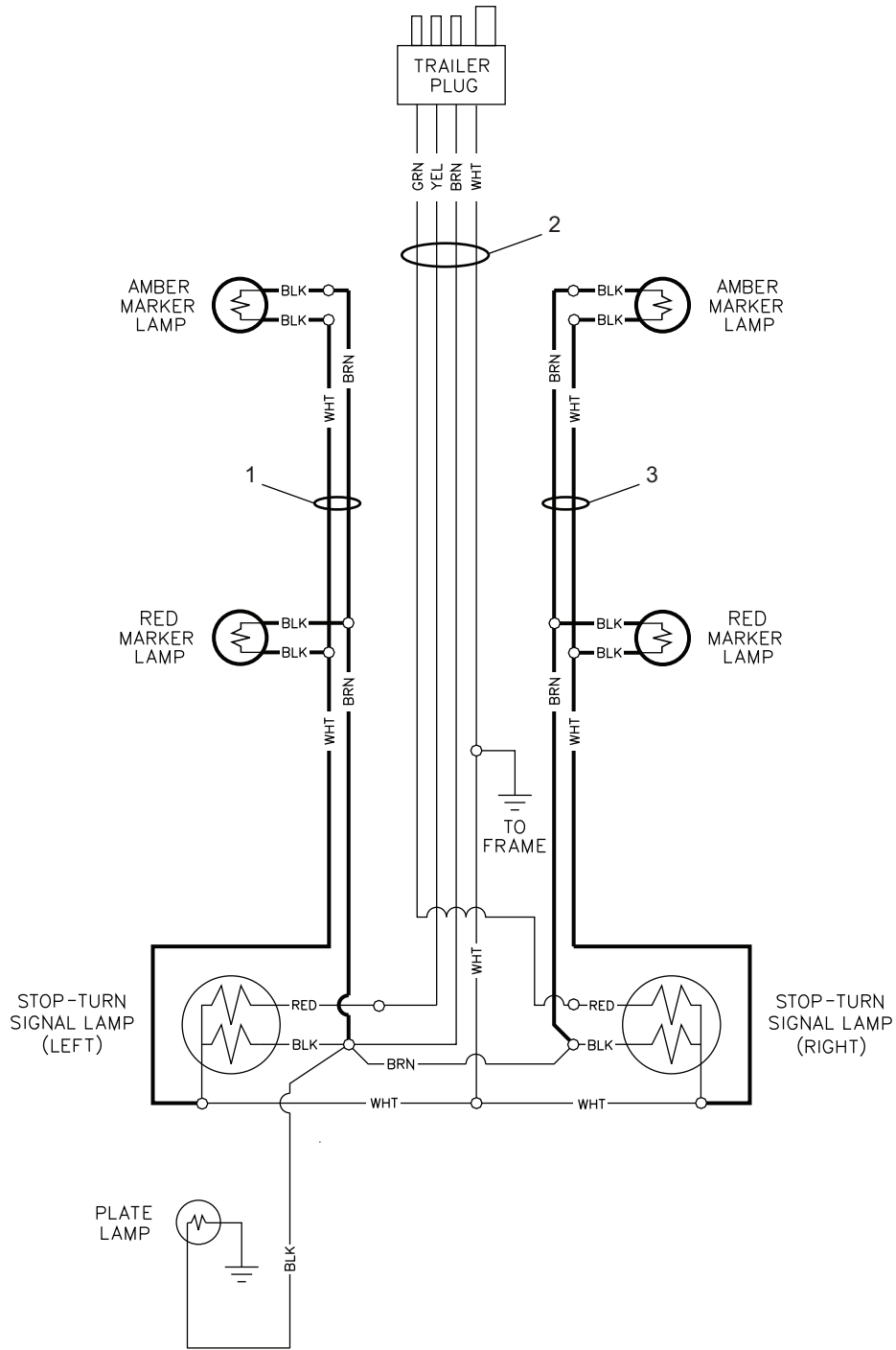
ITEM	PART	QTY	DESCRIPTION	NOTES
1	65963	1	Breaker, 30A, 250V, 2 pole, stud term	
2	65388	1	Light, indicator red - w/ wire 12V DC	
3	14130	1	Receptacle, 120V/20A GFI (5-20R)	
4	65849	1	Breaker, 20A, 120V, 1-pole, push button	
5	14249	4	Breaker, 15A 250V 1 pole	
6	66410	1	PCB, LED lights MLT - expanded	
7	14137	1	Receptacle, 240V/30A twist (L6-30R)	
8	65850	1	Breaker, 10A, 240V, 1 pole push button	
9	15195	1	Switch, key	
10	16694	1	Indicator, glow plug	MLT3060M only
11	15085	1	Gauge, hourmeter	
12	14204	1	Kit, ground bar	
13	13677	1	Hinge, continuous - 11.00	
14	10444	1	Panel, control	For MLT3060M
15	10441	1	Panel, control	For MLT3060K
16	66257	3	Spacer, plastic, .2 ID .375 OD .25 thick	

# CONTROL PANEL ASSEMBLY - MLT3080M/MLT3080K



ITEM	PART	QTY	DESCRIPTION	NOTES
1	65864	1	Breaker, 40A, 250V, 2 pole, screw term	
2	65388	1	Light, indicator red - w/ wire 12V DC	
3	14130	2	Receptacle, 120V/20A GFI (5-20R)	
4	65849	2	Breaker, 20A, 120V, 1-pole, push button	
5	14249	4	Breaker, 15A 250V 1 pole	
6	66410	1	PCB, LED lights MLT - expanded	
7	14137	1	Receptacle, 240V/30A twist (L6-30R)	
8	14841	1	Breaker, 10A, 240V, 1 pole push button	
9	15195	1	Switch, key	
10	65513	1	Glow indicator	MLT3080M only
11	15085	1	Gauge, hourmeter	
12	65963	1	Breaker, 30A, 250V, 2 pole, stud term	
13	14204	1	Kit, ground bar	
14	13677	1	Hinge, continuous - 11.00	
15	10437	1	Panel, control	For MLT3080M
16	13675	1	Panel, control	For MLT3080K
17	66257	3	Spacer, plastic, .2 ID .375 OD .25 thick	

# WIRING HARNESS ASSEMBLY



ITEM	PART	QTY	DESCRIPTION	NOTES
1	10267	1	Harness, left side trailer	
2	10262	1	Assy, trailer light harness	
3	10266	1	Harness, right side trailer	
-	65441	-	Adapter, pig-tail trailer light 4-pin to 12-pin	
-	65465	-	Adapter, trailer wiring flat 4 to rnd 7 blade	
-	65464	-	Adapter, trailer wiring flat 4 to rnd 7 pin	
-	65463	-	Adapter, trailer wiring flat 4 to rnd 6 pin	
-	65548	-	Adapter, 4 pin flat to 4 pin flat x 12.00	

REV: B  
PART NO: 10715  
02.23.12